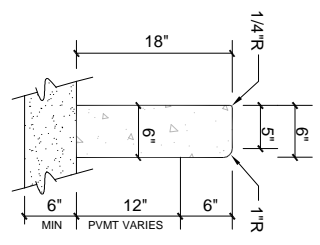
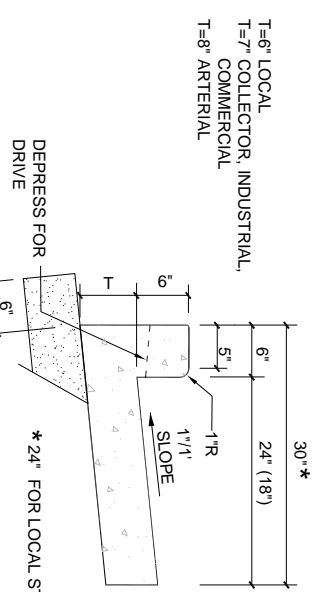


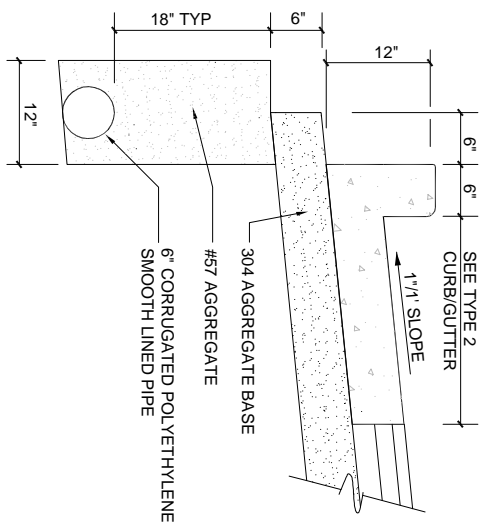
COMBINATION ROLL CURB AND GUTTER
(ONLY WITH APPROVAL OF PLANNING COMMISSION)



TYPE 6
BARRIER CURB



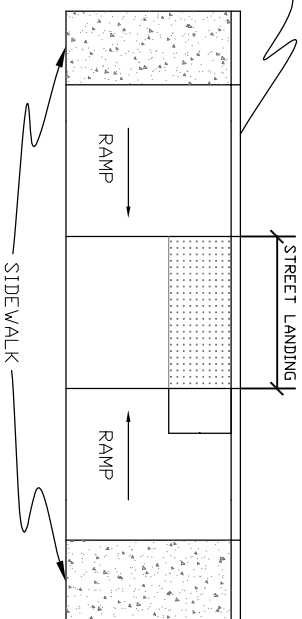
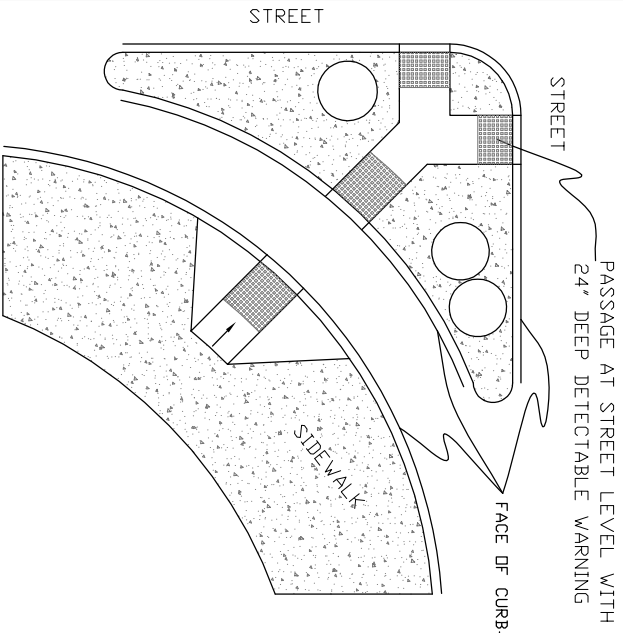
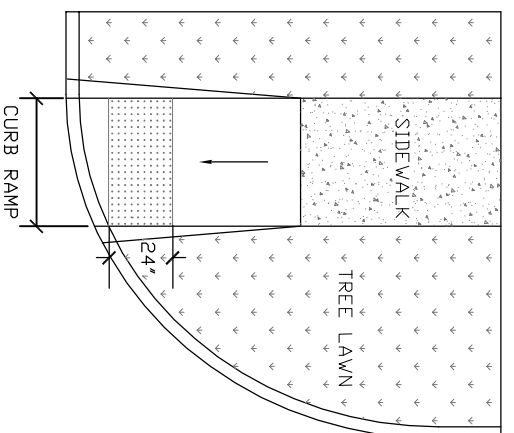
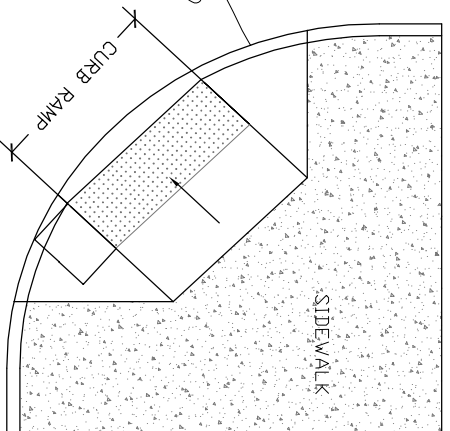
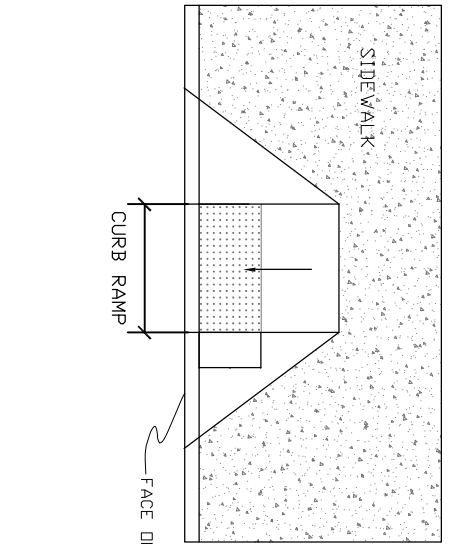
TYPE 2 COMBINATION
CURB AND GUTTER



6" SHALLOW PIPE UNDERDRAIN DETAIL

NOTES
 [A. CONCRETE AND WORK SHALL MEET THE REQUIREMENT SET FORTH IN ODOT ITEM 609 CURBING

- B.** CURBING SHALL HAVE CONTRACTION JOINTS EVERY 10'
- C.** MINIMUM OF 6" OF ODOT 304 SHALL BE PLACED UNDER CURBING.
- D.** CURBING SHALL BE BACKFILLED IMMEDIATELY AFTER FORMS ARE REMOVED OR AS SOON AS PRACTICAL, WHEN SLIP FORMING, PRIOR TO OTHER CONSTRUCTION OPERATIONS.
- E.** PROVIDE BROOM FINISH AND EDGING TO ALL EXPOSED SURFACES.
- F.** APPLY WHITE PIGMENTED CURING COMPOUND ON ALL SURFACES INCLUDING BACK IMMEDIATELY AFTER FINISHING SURFACES. ANY OTHER METHOD OR TYPE OF CURING COMPOUND MUST BE PREAPPROVED.
- G.** CONCRETE SHALL BE ODOT CLASS C (4000 PSI, 800LB/CY CEMENT), PROPORTIONING OPTIONS 1 AND 2 NOT ALLOWED.
- H.** CONCRETE SHALL CONTAIN 6% ± 1% OF TOTAL AIR.
- I.** TYPE 6 CURBS ARE FOR USE AROUND MEDIAN SECTION.
- J.** CURB, SHALL BE BLOCKED OUT AT MINIMUM OF 5' ON EACH SIDE OF NEW CATCH BASIN INSTALLATION.
- K.** UNDERDRAIN, WHEN USED, MUST BE INSTALLED PRIOR TO CURB INSTALLATION. FOR CONCRETE STREETS, MINIMUM FLOW LINE SLOPE OF PERFORATED PIPE IS 0.003 FT/FT (FEET PER FOOT) TO OUTLET.
- L.** MINIMUM FLOW LINE SLOPE OF PERFORATED PIPE IS 0.003 FT/FT TO OUTLET.
- M.** UNDERDRAIN MAY BE USED FOR SUMP PUMP DRAINS WITH A MANUFACTURED TEE, WHEN NO OTHER STORM OUTLET IS AVAILABLE AS DETERMINED BY THE CITY. IN NO CASE SHALL DOWNSPOUTS BE TIED INTO THE UNDERDRAIN.



NOTES:

1. DETECTABLE WARNINGS SHALL BE PROVIDED WHEREVER A CURB RAMP CROSSES A VEHICULAR WAY, EXCLUDING UNSIGNALIZED DRIVEWAY CROSSINGS.
2. DETECTABLE WARNINGS SHALL BE PROVIDED 24 INCHES IN THE DIRECTION OF TRAVEL AND EXTEND THE FULL WIDTH OF THE CURB RAMP OR FLUSH SURFACE. THE DETECTABLE WARNING SHALL BE LOCATED ADJACENT TO THE CURB LINE.
3. MATERIALS SHALL COMPLY WITH COC SUPPLEMENTAL SPECIFICATION 1551.
4. DETECTABLE WARNINGS SHALL BE PLACED 6" TO 8" BEHIND FACE OF CURB AND BEHIND THE CURB JOINT.